

Energy Explorer Kit Quick Start Guide

enistic

Product Code BBSP-SK1



1 Do not plug in the USB Zone Controller yet.

2 Insert the supplied CD and run the file 'Setup.Exe'



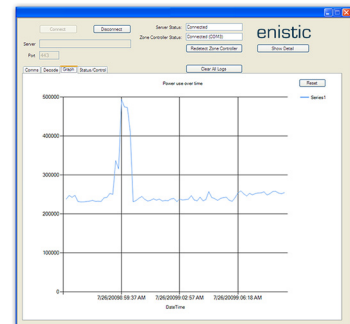
setup.exe



3 Follow the instructions on the screen.

- When prompted, insert your USB Zone Controller.
- Wait until the red light comes on and then proceed with the installation.
- If you get boxes warning of security certificates being out of date or incorrect, press 'Continue'

4 Run the Energy Manager Lite by going to the Start Menu then selecting Enistic followed by Energy Manager Lite



5 Plug the Smart Socket into a mains socket. After approximately 10 seconds, you should see the serial number of the Smart Socket appearing in the list of serial numbers in the Energy Manager Lite. Plug the device you wish to measure into the Smart Socket. The Energy Manager Lite will show the power being used by that device in Watts.

Frequently Asked Questions

What frequency does the Smart Socket use?

The Smart Sockets use Zigbee Pro to communicate which works on a 2.4GHz that does not interfere with WiFi or mobile phones.

Will it interfere with WiFi?

No.

What is the range of the Smart Sockets?

Each Smart Socket has a range of up to 30m and can operate through most walls and doors, although doing so will reduce the range slightly. Each Smart Socket automatically talks to other Smart Sockets which can increase the range significantly.

What is the maximum power that can be plugged into a Smart Socket?

The Smart Socket is designed for general office and household use and can handle 13A of resistive load, i.e. 3.1KW. Inductive and larger loads are not suitable for direct use with this equipment.

How accurate is the Enistic System?

Smart Sockets are very accurate and measure the power to the nearest 0.1W with an accuracy of +/- 2%. They include facilities to measure the true power of devices rather than apparent power.

How many Smart Sockets can be used with the kit?

Each USB Zone Controller can handle up to 50 Smart Sockets reporting at 10 second intervals. The Energy Manager Lite, however, is limited to showing 16 Smart Sockets and to use more than this you should consider using the Energy Manager Online solution.

Can I export the data, produce reports or control devices automatically?

No. If you want these functions you should consider using the Energy Manager Online Solution.

Can I use the Energy Manager Online solution?

Yes, but if you have version 1.1 or below of the Energy Manager Lite, please download and install the Zone Controller Utility from the downloads area and use that instead. For versions over 1.1, please check the checkbox 'Upload data to the Energy Manager Online Server'

Troubleshooting guide

Software takes a long time to install

The USB driver in particular takes a long time to install. Checking all the communications ports for the USB Zone Controller can sometimes take up to 4 minutes on a modern specification PC, so please be patient.

The Smart Socket does not show up in the Energy Manager Lite

This can be caused by a number of problems:

- 1- Check that the Energy Manager Lite is able to detect the Zone Controller. You should find that the box titled 'Communications Port' is set to a value other than 'Not found.' If it says 'Not found' then please click the 'Search for Zone Controller' button. If it continues to not find the Zone Controller, then please call us or go onto our website for help.
- 2- Check that the Smart Socket is in range. To debug the system, try running with the Smart Socket roughly 1 metre away from the Zone Controller.
- 3- The Smart Socket is not establishing communication with the Zone Controller. This should not happen, but if the Smart Socket has been running for over 5 minutes then the LED on the Smart Socket should be flashing once every 10 seconds. If it is not, then communication with the Zone Controller cannot be established and you should contact Enistic for more help.
- 4 - The Smart Socket is connecting for the first time. The Smart Socket, when it is first powered on, or when it is used with a different Zone Controller, will flash rapidly for up to 5 minutes indicating it is searching for a Controller and exchanging security information with it.

You cannot communicate with the Energy Manager Online

You can access the online system with version 1.2 or above. Communication is via TCP port 443. This is a locally initiated connection and is firewall friendly in most cases, but if there are difficulties please check this aspect. You do not need to open port 443 for inbound communication. Ensure that the 'Upload data to the Energy Manager Online Server' is checked.

